

APPLICATIONS OF Matala®:

1. ROTATING BIO-DISCS
2. SUBMERGED BED FILTERS
3. VORTEX
4. SEDIMENTATION CHAMBERS
5. TRICKLING FILTERS
6. PROTECTION OF FISH FRY / SPAWNING MAT
7. ANTI-CLOGGING OF PUMPS
8. OXYGENATION OR DE-GASSING OF UNDERGROUND WATER
9. SPAWNING MAT
10. PROTECTION OF PLANT BASINS IN PONDS
11. SURFACE SKIMMERS
12. MECHANICAL PRE-FILTRATION

Matala®
"Make water alive"

MATALA WATER TECHNOLOGY CO., LTD.
121 Tzu Li 2St., Wu Chi Dist., Taichung City, Taiwan
Tel: +886-4-2630-4015 Fax: +886-4-2630-4067
<http://www.matala.com.tw>

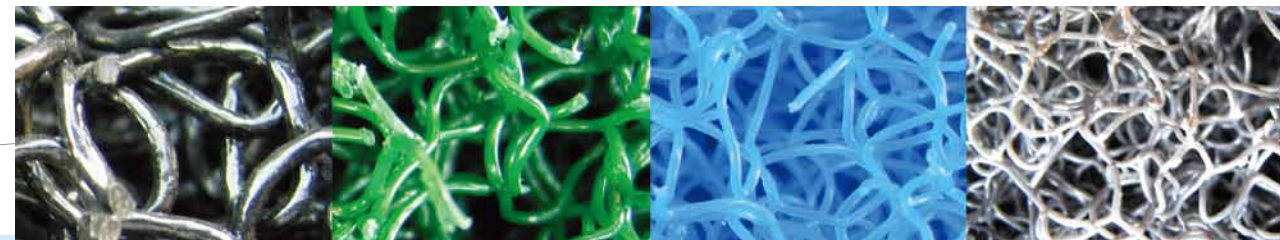
Matala®
"Make water alive"



Think Progressive !

Are you looking for an all-round solution for mechanical and biological filtration?

Matala® represents the latest generation of filter media that are rapidly gaining interest in the market. Thanks to the multiple advantages **Matala®** is the ultimate answer for your needs. **Matala®** is made of curly fibre Thermo-Polypropylene Compounds (**TPPC**) that are formed into layers and shapes of different thickness. The formula of the **TPPC** and the thickness of the fibre used will determine the structure of the filter media, their specific surface, their density and stiffness.



Matala® FILTRATION MEDIA ADVANTAGES:



► Hose flushing

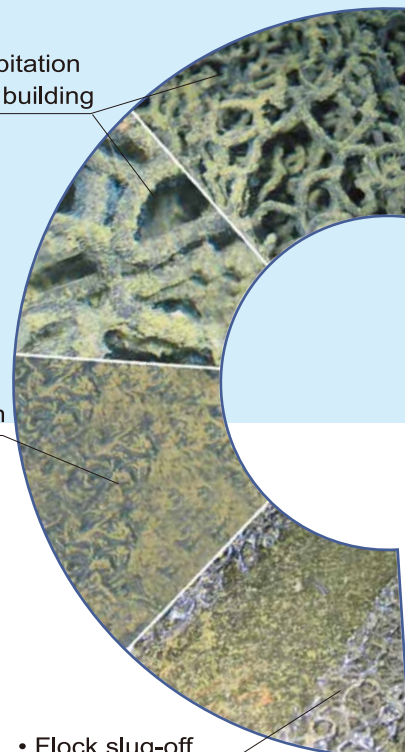
>> Easy cleaning.



► Rinse and dip

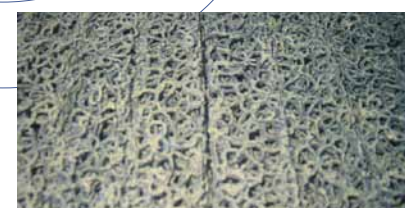
• Precipitation
+ flock building

• Flock saturation



• Flock slug-off

>> Very resistant to plugging. Perfect for prefiltration and sedimentation chambers.



Application of **Matala®** sheets in submerged filter beds.



Specifications of Matala® Filtration Media

MATALA Type	Specific surface m2 / m3	Fibre diameter in mm	Free volume %
Filter grid Low Density, Black	150-200	1.8	92
Filter mat Medium Density, Green	250-300	0.9	93
Filter mat High Density, Blue	350-400	0.6	94
Filter mat Super High Density, White	450-500	0.45	94

>> Excellent surface area with good adhesion of nitrifying bacteria. A high number of interstitial spaces in the tri-dimensional matrix of the filter media improves an early and even growth of bacteria.

- 4 densities allow for step-wise transition from mechanical to biological filtration.
- High free volume for smooth, even water flow throughout.



► Easy to cut and fit



► Use hole saw



► Easy slug of flocs.



► T - Matala® and application



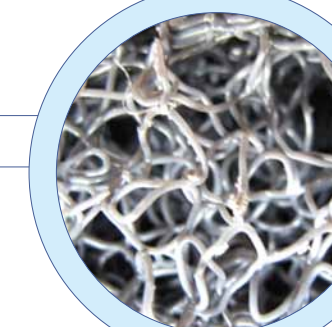
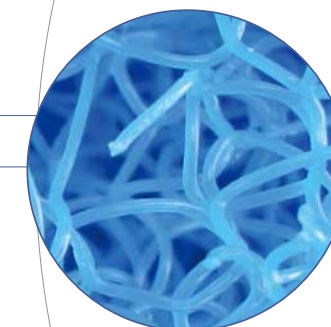
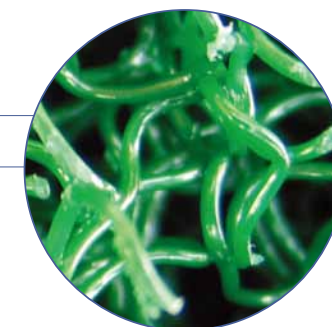
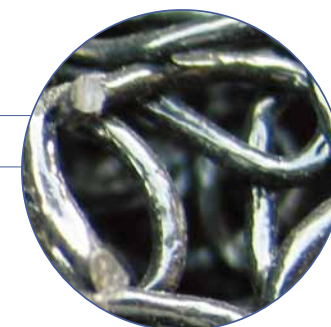
► T - Matala® for Oil-Water separation



► R - Matala®



► R - Matala® and application

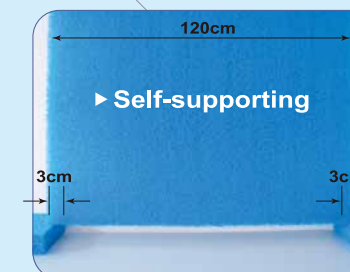


Think Progressive!

- Light weight.
- Versatile and durable.
- Made of Thermo-polypropylene compounds; non-toxic to the environment.



► Form-stable



► Self-supporting



20kg

20kg

Rigid

► 40 → 39mm

DE-IRONING of underground water.

► Precipitation of iron floc on **Matala®** fibres.



► Aeration of underground water.



► DE- IRONING tower.



KOIMART THAILAND