

# Firestone

## SPECIALTY PRODUCTS

---

### PondGard™ Rubber Liner Installation Detail 2

#### Anchor Trench Configuration



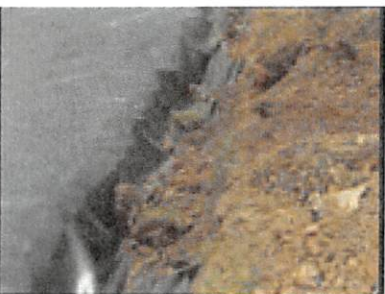
**Step 1-** Set the anchor trench approximately 3.00' (0.91 m) back from the top of the slope.



**Step 2-** Check to make sure the transition at the top of the anchor-trench wall, nearest the slope, is free from protrusions.



**Step 3-** Have an engineer use a pull out calculation to determine what size anchor trench is required. Without a pull out calculation, a typical anchor trench is 1.00' (0.30 m) wide and 2.00' (0.61 m) deep.



**Step 4-** Once the PondGard membrane is installed, backfill the anchor trench with clean-fill and compact the soil.